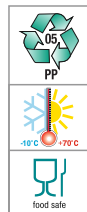
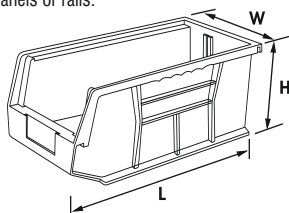


■ MADE FROM POLYPROPYLENE COPOLYMER.

- Strong ribs provided for optional partitions to increase storage options.
- Full length rear lip support provided for hanging bins on louvre panels or rails.
- Resistant to most industrial solvents.
- Reinforced ribs adds strength and avoids spreading.
- Bins are designed to stack one on top of each other.
- Extra wide stacking base for secure stacking.
- Extra wide label slot for easy content identification.
- Stopper prevents stacked bins from shifting forward.



Art No	: W-05
Outside Dimensions in mm	: 109 (L) x 104 (W) x 49 (H)
Inside Dimensions in mm	: 95 (L) x 89 (W) x 43 (H)
Effective Height in mm	: 23
Standard Packing	: 60 pcs. per ctn.
Volume Per Box CBM	: 0.0383
Slots for Partition	: NA
Colour	: Red / Blue



Art No	: W-11
Outside Dimensions in mm	: 136 (L) x 106 (W) x 76 (H)
Inside Dimensions in mm	: 125 (L) x 90 (W) x 65 (H)
Effective Height in mm	: 28
Standard Packing	: 60 pcs. per ctn.
Volume Per Box CBM	: 0.0688
Slots for Partition	: NA
Colour	: Red / Blue



Art No	: W-12
Outside Dimensions in mm	: 187 (L) x 106 (W) x 76 (H)
Inside Dimensions in mm	: 171 (L) x 90 (W) x 65 (H)
Effective Height in mm	: 32
Standard Packing	: 40 pcs. per ctn.
Volume Per Box CBM	: 0.0639
Slots for Partition	: NA
Colour	: Red / Blue

All dimensions in mm approx.



Art No	: W-125
Outside Dimensions in mm	: 205 (L) x 139 (W) x 126 (H)
Inside Dimensions in mm	: 190 (L) x 115 (W) x 121 (H)
Effective Height in mm	: 61
Standard Packing	: 40 pcs. per ctn.
Volume Per Box CBM	: 0.1512
Slots for Partition	: NA
Colour	: Red / Blue



Art No	: W-13
Outside Dimensions in mm	: 274 (L) x 140 (W) x 127 (H)
Inside Dimensions in mm	: 256 (L) x 115 (W) x 115 (H)
Effective Height in mm	: 56
Standard Packing	: 40 pcs. per ctn.
Volume Per Box CBM	: 0.2102
Slots for Partition	: 1 Slot for Vertical Partition.
Colour	: Red / Blue



Art No	: W-135
Outside Dimensions in mm	: 280 (L) x 210 (W) x 179 (H)
Inside Dimensions in mm	: 255 (L) x 170 (W) x 160 (H)
Effective Height in mm	: 80
Standard Packing	: 20 pcs. per ctn.
Volume Per Box CBM	: 0.2098
Slots for Partition	: 1 Slot for Vertical Partition.
Colour	: Red / Blue



Art No	: W-14
Outside Dimensions in mm	: 375 (L) x 210 (W) x 179 (H)
Inside Dimensions in mm	: 355 (L) x 170 (W) x 160 (H)
Effective Height in mm	: 80
Standard Packing	: 10 pcs. per ctn.
Volume Per Box CBM	: 0.1537
Slots for Partition	: 1 Slot for Vertical Partition.
Colour	: Red / Blue



Art No	: W-15
Outside Dimensions in mm	: 457 (L) x 280 (W) x 255 (H)
Inside Dimensions in mm	: 432 (L) x 241 (W) x 240 (H)
Effective Height in mm	: 108
Standard Packing	: 6 pcs. per ctn.
Volume Per Box CBM	: 0.2079
Slots for Partition	: 1 Slot for Vertical Partition.
Colour	: Red / Blue



Art No	: W-16
Outside Dimensions in mm	: 375 (L) x 415 (W) x 179 (H)
Inside Dimensions in mm	: 355 (L) x 375 (W) x 160 (H)
Effective Height in mm	: 80
Standard Packing	: 5 pcs. per ctn.
Volume Per Box CBM	: 0.1537
Slots for Partition	: 3 Slots for Vertical Partitions.
Colour	: Red / Blue

All dimensions in mm approx.



Art No : W-17
 Outside Dimensions in mm : 460 (L) x 420 (W) x 292 (H)
 Inside Dimensions in mm : 435 (L) x 375 (W) x 282 (H)
 Effective Height in mm : 155
 Standard Packing : 3 pcs. per ctn.
 Volume Per Box CBM : 0.1805
 Slots for Partition : 3 Slots for Vertical Partitions.
 Colour : Red / Blue

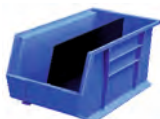
All dimensions in mm approx.



WINGS 13
with 1 No of W-13VP



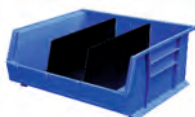
WINGS 135
with 1 No of W-135VP



WINGS 14
with 1 No of W-14VP



WINGS 15
with 1 No of W-15VP



WINGS 16
with 2 Nos of W-16VP



WINGS 17
with 1 No of W-17VP

WINGS Bins Fitted with partitions.

WINGS BIN PARTITIONS

Other accessories used to optimize Rhino Bin's usage are bin partitions.

Vertical Partition for WINGS 13 bins.

Art No : W-13VP Standard Packing : 10 pcs. per ctn.

Vertical Partition for WINGS 135 bins.

Art No : W-135VP Standard Packing : 10 pcs. per ctn.

Vertical Partition for WINGS 14 bins.

Art No : W-14VP Standard Packing : 10 pcs. per ctn.

Vertical Partition for WINGS 15 bins.

Art No : W-15VP Standard Packing : 10 pcs. per ctn.

Vertical Partition for WINGS 16 bins.

Art No : W-16VP Standard Packing : 10 pcs. per ctn.

Vertical Partition for WINGS 17 bins.

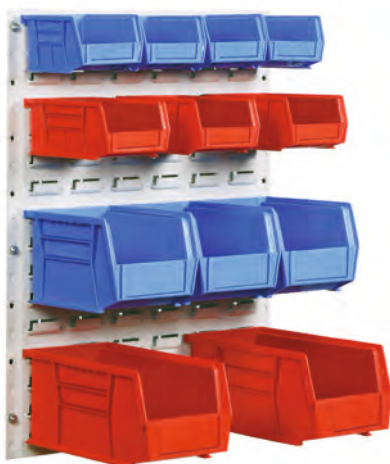
Art No : W-17VP Standard Packing : 10 pcs. per ctn.

LOUVRE PANELS

Are manufactured from 1.5mm (T) CRCA Steel and Powder coated in Light Grey RAL 7035 colour. WINGS BINS can be mounted with ease in various combinations as listed below :

Maximum No of bins per Louvre Panel				
Art No	LP 1	LP 2	LP 3	LP 6
SIZE	457 x 457	457 x 610	457 x 914	457 x 1829
W-05	24	32	48	96
W-11	16	20	32	64
W-12	16	20	32	64
W-125	9	12	18	36
W-13	9	12	18	36
W-135	4	6	8	18
W-14	4	6	8	18
W-16	2	3	4	9

All dimensions in mm approx.



LP 2 Louvre Panel fitted with WINGS Bins.

LOUVRE PANEL STAND : FSS/C ▶

Free standing stand FSS/C are made from M.S. Steel Square Pipes of size 25mm (L) x 25mm (W) x 1.2mm (T) and are duly powder coated in Light Grey RAL 7035 colour. Stands are fitted with ergonomic plastic shoes for proper stability. These stands are used to mount louvre panels LP 1, LP 2 or LP 3.

Louvres can be mounted on single side or both sides for dual use.

Art No : FSS/C

Dimension : 457mm (W) X 630mm (D) X 1560mm (H)

Colour : Light Grey RAL 7035.



FSS/C

Fitted with Louvre Panel
LP 2- 4 Nos (2 Nos on each side)



FSS/C

Fitted with Louvre Panel
LP 2- 2 Nos on one side.



FSS/C

Fitted with Louvre Panel
LP 3- 2 Nos (1 No on each side)

No of Louvre Panels per stand			
FSSS	LP 1	LP 2	LP 3
SINGLE	2	2	1
DOUBLE	4	4	2

LOUVRE PANEL STAND : FSS/LP 6

Free standing stand FSS/LP 6 are made from M.S. Steel Square Pipes of size 25mm (L) x 25mm (W) x 1.2mm (T) and are duly powder coated in Light Grey RAL 7035 colour. Stands are fitted with ergonomic plastic shoes for proper stability. These stands are used to mount Louvre Panel LP 6. Louvres can be mounted on single side or both sides for dual use.

Art No : FSS/LP 6

Dimension : 457mm (W) X 905mm (D) X 2160mm (H)
Colour : Light Grey RAL 7035.



FSS/C

Fitted with Louvre Panel LP 6- 2 Nos
(1 No on each side)

UNIVERSAL RAIL : AUR-1▶

Universal Rails are made from 1.5 CRCA Steel duly powder coated in Light Grey RAL 7035 colour and can be mounted on any surface like walls, benches, slotted angle systems, stands, and trolleys. These rails increase the flexibility of using different sizes of bins with ease and help in optimizing storage space.

Art No : AUR -1

Dimension : 915mm (L) x 60mm (H)
Colour : Light Grey RAL 7035.



Rhino Bins Mounted on Universal Rail AUR-1

SHOP FLOOR TROLLEY : SFT

Alkon Shop Floor Trolleys are made from MS steel Rectangular Pipes of size 20mm (L) x 40mm (W) x 1.2mm (T) and duly powder coated in Light Grey RAL 7035 colour. Trolleys can be used single sided or double sided as per requirement. Ideal for component storage and transfer to assembly or production areas. Unit comprises of base unit with aluminium checkered top plate fitted with castors and a frame on which two Louvre Panels of size LP 2 can be fitted on each side. Trolley has handles on both sides. It is packed in knock down condition.

Art No : SFT

Dimension : 970mm (W) x 600mm (D) x 1100mm (H)
Colour : Light Grey RAL 7035.

Trolley without Louvre Panels and bins.

(Order 2 Nos of LP 2 for single side use and 4 Nos of LP 2 for double side use separately).



SHOP FLOOR TROLLEY - SFT

Fitted with mixed WINGS Bins on both the sides.

WINGS Bins	W-05	W-11	W-12	W-125
Max. Bins per Rail	8	8	8	6
WINGS Bins	W-13	W-135	W-14	W-16
Max. Bins per Rail	6	4	4	2

WINGS TUFF SINGLE SIDED STAND : ATSSS►

These stands are made from M.S. Steel Rectangular Pipes of size 25mm (L) x 50mm (W) x 1.6mm (T). These stands are used to mount three panels of ATSLP 914mm (W) X 610mm (H) on single side. Dimension : 915mm (W) x 550mm (D) x 1925mm (H)
Colour : Light Grey RAL 7035.

Maximum No of WINGS Bins mounted on WINGS Tuff Stands & Trolley shown as below :

ART NO	WINGS TUFF STAND		WINGS TUFF TROLLEY	
	Single Sided	Double Sided	Single Sided	Double Sided
W-05	192	384	128	256
W-11	128	256	88	176
W-12	128	256	88	176
W-125	72	144	48	96
W-13	72	144	48	96
W-135	36	72	24	48
W-14	36	72	24	48
W-16	18	36	12	24



ATSSS Stand
Fitted with WINGS W-14 Bins
on single side.

◄ WINGS TUFF DOUBLE SIDED STAND : ATDSS

These stands are made from M.S. Steel Rectangular Pipes of size 25mm (L) x 50mm (W) x 1.6mm (T) These stands are used to mount three panels of ATSLP 914 X 610 on each side.
Dimension : 915mm (W) x 700mm (D) x 1925mm (H)
Colour : Light Grey RAL 7035.



ATDSS Stand
fitted with WINGS W-12 Bins
on both the sides.

WINGS TUFF TROLLEY : ATTB►

WINGS Tuff Trolleys are made from Rectangular Steel Pipes of size 25mm (L) x 50mm (W) x 1.6mm (T) duly powder coated in Light Grey RAL 7035 colour. Trolleys save time travelling to items stored in static shelving installations by putting all your small parts storage bins onto the trolley. Trolley can be used single sided or double sided as per requirement. Each trolley comes fitted with ergonomic plastic handles so that the trolley can be comfortably moved. The trolley is fitted with heavy duty swivel castors that offer ease of movement. Two of the castors are braked, which means the trolley can be secured when not in use.

Art No : ATTB

Trolley without Louvre Panels and bins.
(Order 2 Nos of ATSLP 914 x 610 for single side use and
4 Nos of ATSLP 914 x 610 for double side use separately).

Dimension : 995mm (W) x 700mm (D) x 1430mm (H)
(Considering castor wheel extension widthwise inclusive of handle)
Colour : Light Grey RAL 7035.



ATTB TROLLEY
fitted with mixed WINGS Bins
on both the sides.